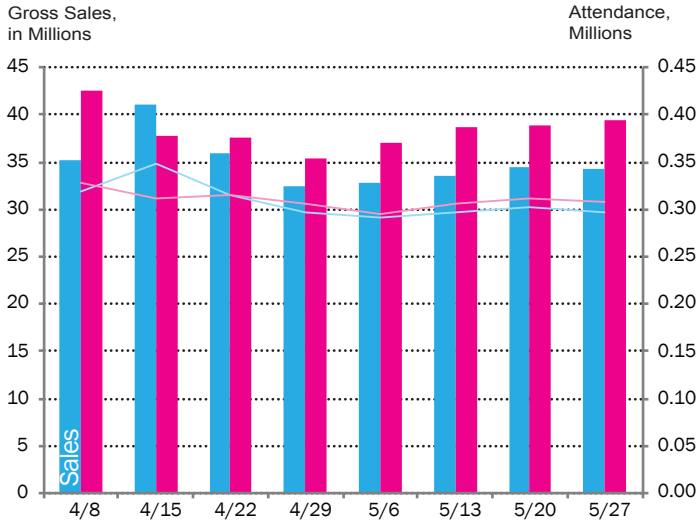


Times Square

May 2018 Key Indicators

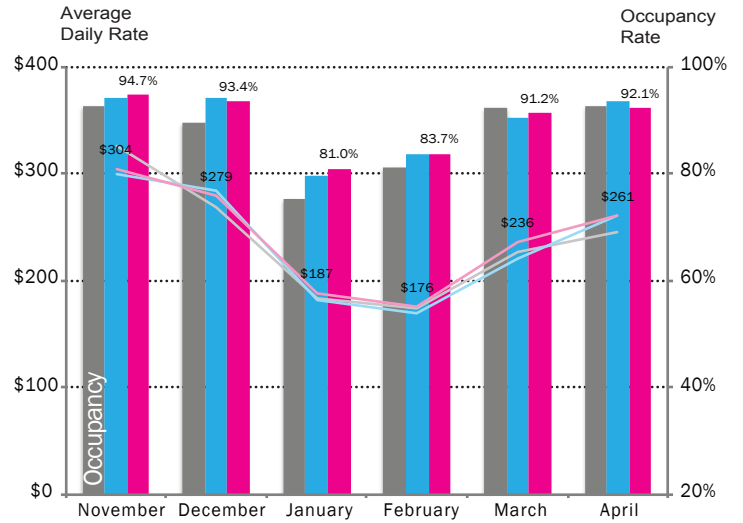
BROADWAY Last 8 Weeks



Broadway sales and attendance remained strong in May, exceeding 2017 levels in both categories throughout the month.

Source: The Broadway League

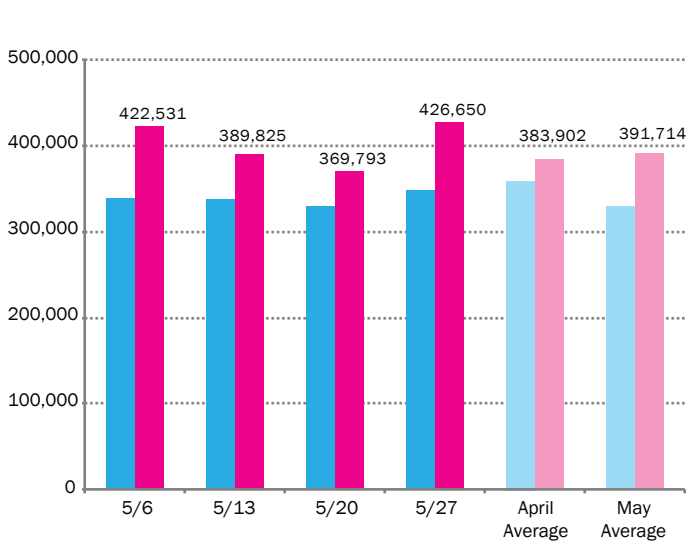
HOTELS Last 6 Months



Following seasonal trends, average daily room rates increased significantly in April. While room rates outpace those of the last two years, occupancy remains slightly below 2016 and 2017 levels.

Source: STR

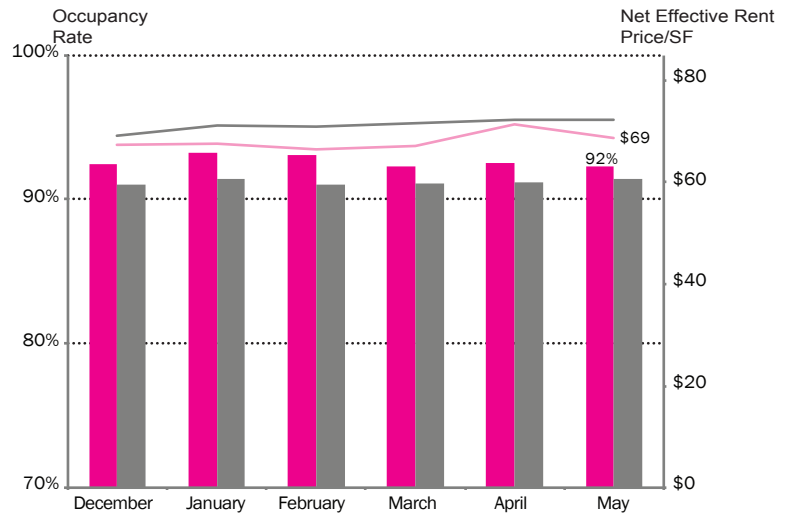
PED COUNTS Last 4 Weeks



Pedestrian counts increased significantly in May. This month's average daily count was 391,714, exceeding that of May of last year by nearly 20%. This month, Times Square reached a peak daily count of 440,725 people on Saturday, May 26.

Source: Springboard

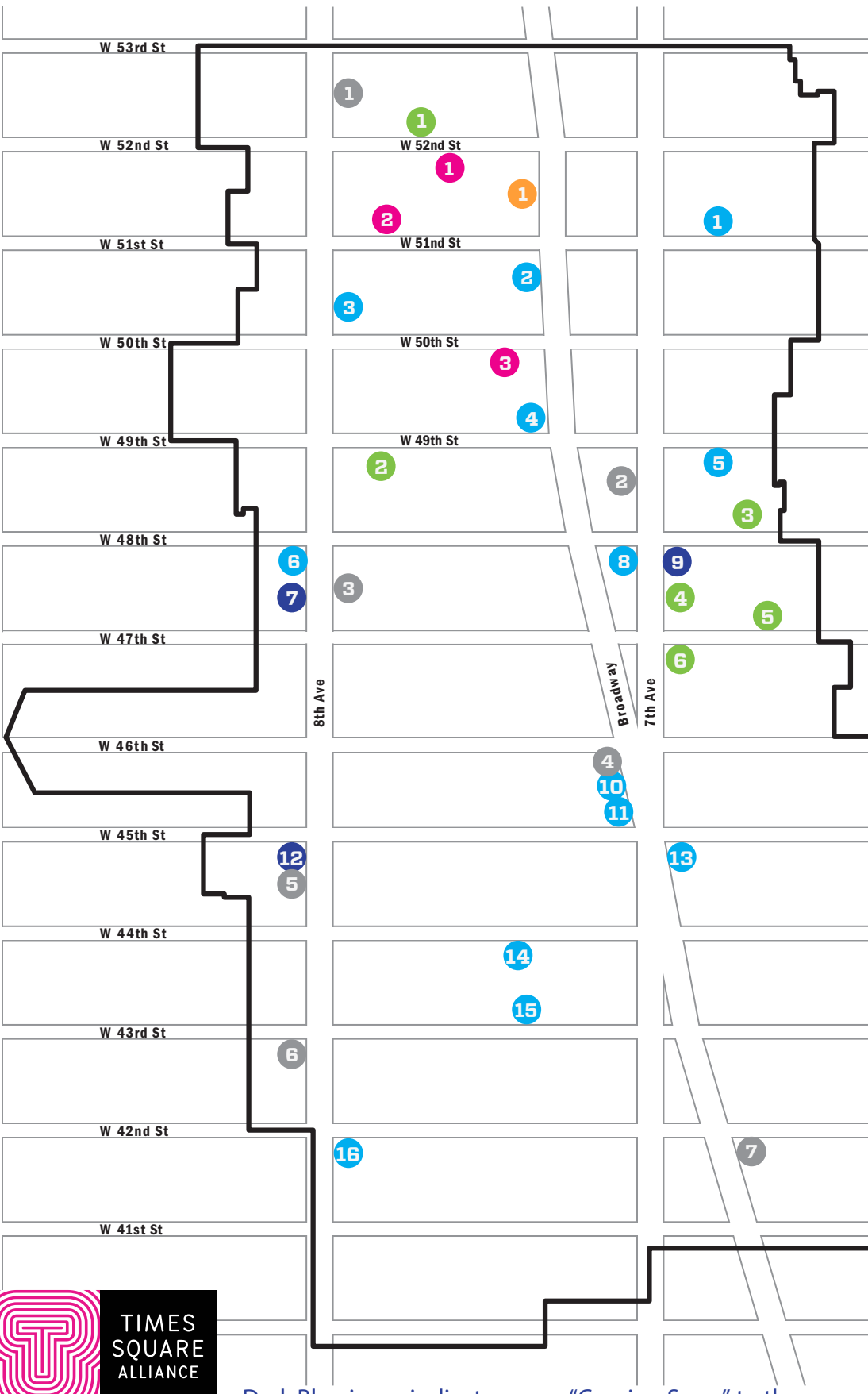
CLASS A Last 6 Months



Square Class A occupancy rates remained stable at 92%. Average price per square foot dropped slightly from \$71 to \$69.

Source: CoStar, Compstak

*Beginning in December 2016, the Alliance changed their methodology calculating Class A commercial rents. The reported number is now a six-month moving average of net effective rents.



OPENINGS

1. Haswell Green's
2. Saar Indian Bistro
3. Cafe 11

COMING SOON

1. Maison Kayser Bakery & Cafe
2. Princi Bakery
3. Vanguard Wine Bar
4. CVS
5. Ichiran
6. First & Last
7. Eve Beauty Source
8. Mia's Brooklyn Bakery
9. CoverGirl
10. Levi's
11. Sephora
12. Margarita Saloon
13. McDonald's
14. The Ribbon
15. American Market by Todd English
16. Lionsgate Entertainment City

CLOSINGS

1. World of Nuts
2. Cameras and Computers
3. New York Look
4. Uniqlo Pop-up
5. L'ybane Wine Bar & Restaurant
6. High-Tech Electronics
7. Toys "R" Us Pop-up

IN DEVELOPMENT

(A new building under construction)

1. Midtown Tower (2018)
2. Hotel Development (TBD)
3. Hard Rock Hotel (2019)
4. Marriott Edition (2018)
5. Riu Hotel (2020)
6. DoubleTree Hotel/Palace Theatre (TBD)

MAJOR OFFICE

1. 1500 Broadway
Weber, Gallagher,
Simpson
6,650 SF



Dark Blue icons indicate a new "Coming Soon" to the map.