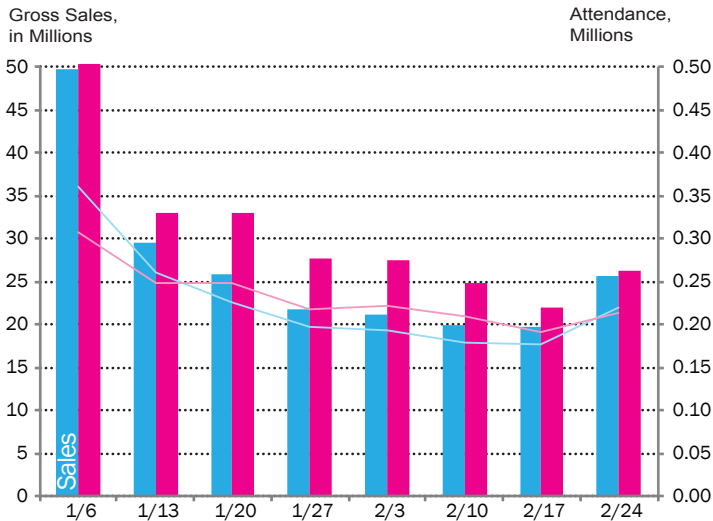


# Times Square

# February 2018 Key Indicators

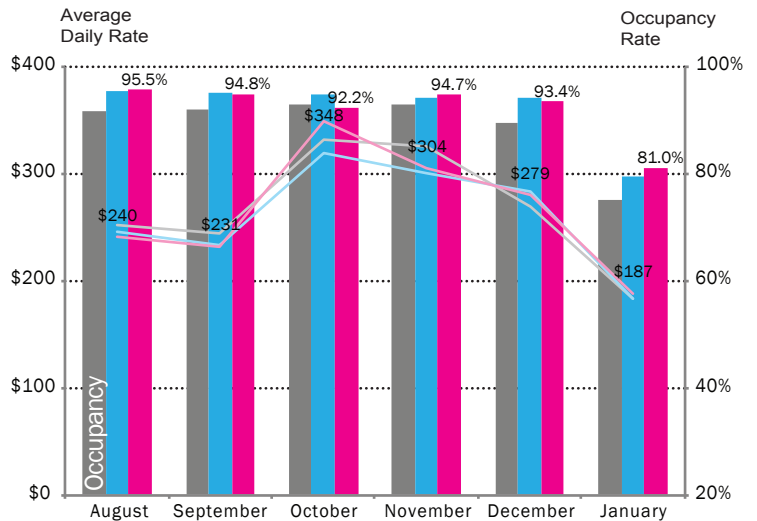
## BROADWAY Last 8 Weeks



Broadway sales and attendance remained strong in February and were higher than this time last year.

Source: The Broadway League

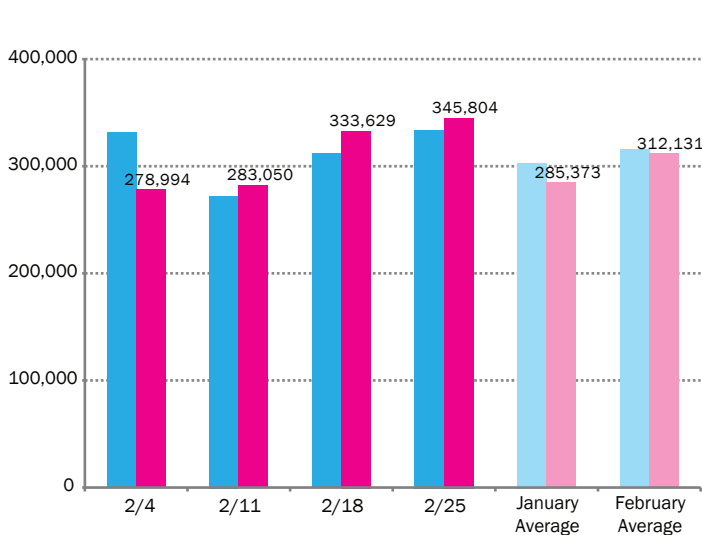
## HOTELS Last 6 Months



While both hotel room rates and occupancy in Times Square have dropped with seasonal trends, January hotel occupancy is the highest it has been in two years.

Source: STR

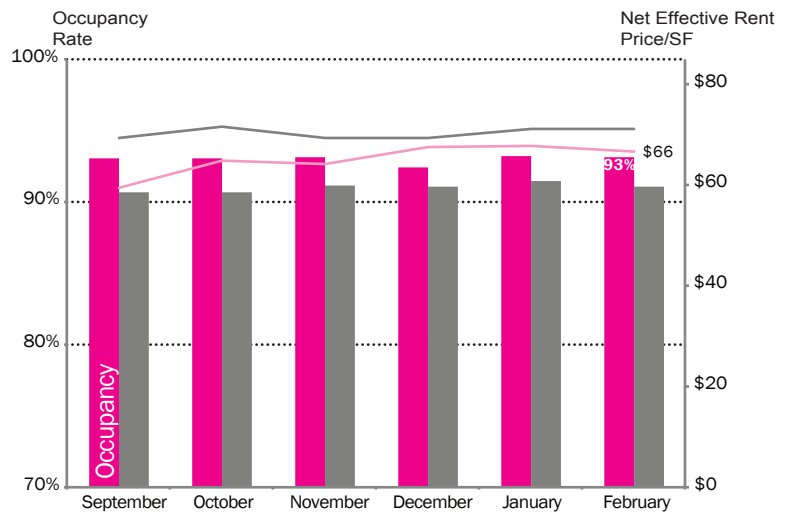
## PED COUNTS Last 4 Weeks



The average daily pedestrian count increased by 10% from January to February. This month, Times Square reached a peak daily count of 405,558 people on Wednesday, February 21.

Source: Springboard

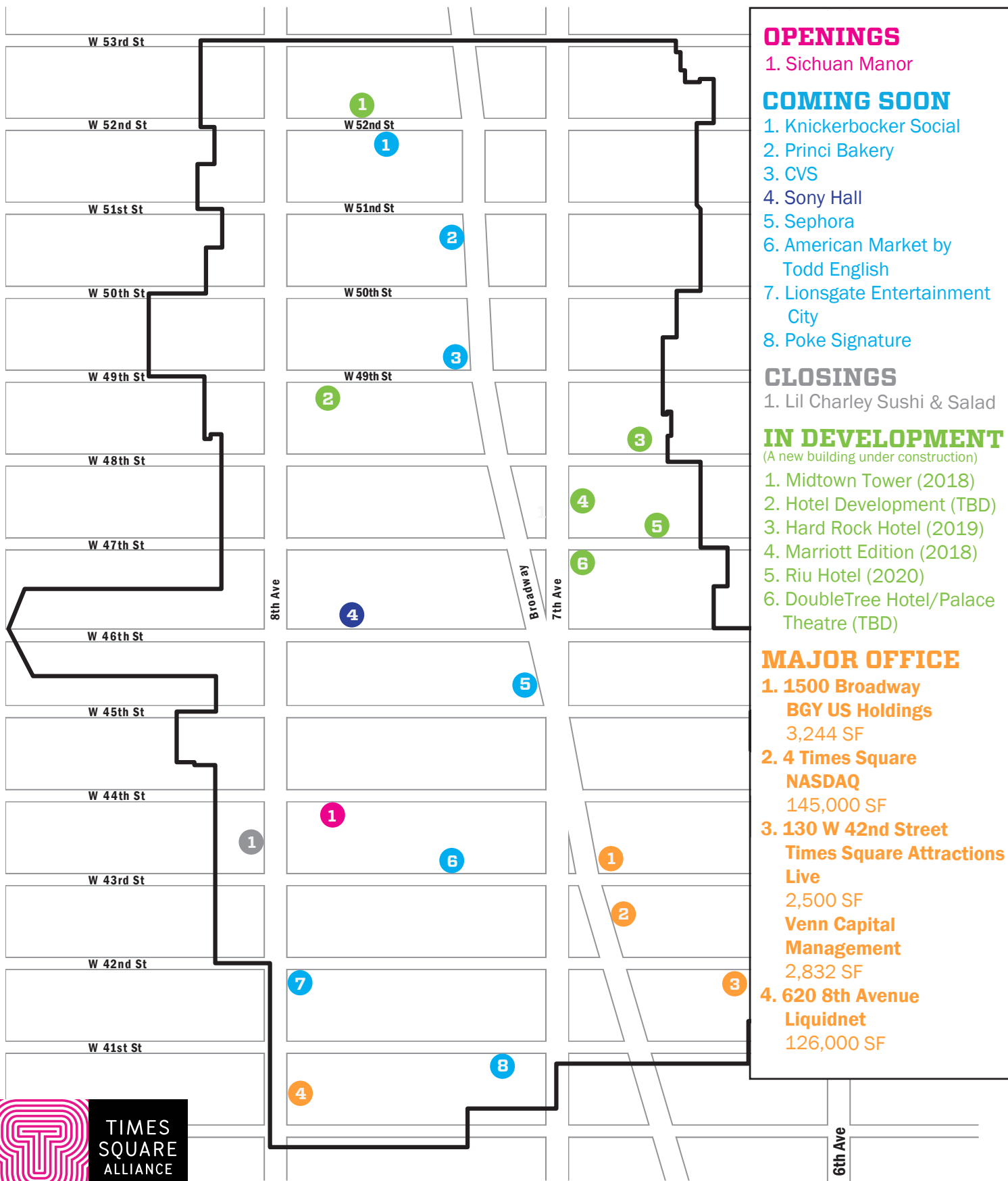
## CLASS A Last 6 Months



Times Square Class A occupancy rates remained stable this month at 93%. Average price per square foot has dropped slightly from \$68 to \$66.

Source: CoStar, Compstak

\*Beginning in December 2016, the Alliance changed their methodology calculating Class A commercial rents. The reported number is now a six-month moving average of net effective rents.



**OPENINGS**

1. Sichuan Manor

**COMING SOON**

1. Knickerbocker Social
2. Princi Bakery
3. CVS
4. Sony Hall
5. Sephora
6. American Market by Todd English
7. Lionsgate Entertainment City
8. Poke Signature

**CLOSINGS**

1. Lil Charley Sushi & Salad

**IN DEVELOPMENT**  
(A new building under construction)

1. Midtown Tower (2018)
2. Hotel Development (TBD)
3. Hard Rock Hotel (2019)
4. Marriott Edition (2018)
5. Riu Hotel (2020)
6. DoubleTree Hotel/Palace Theatre (TBD)

**MAJOR OFFICE**

1. 1500 Broadway  
BGY US Holdings  
3,244 SF
2. 4 Times Square  
NASDAQ  
145,000 SF
3. 130 W 42nd Street  
Times Square Attractions Live  
2,500 SF
4. 620 8th Avenue  
Liquidnet  
126,000 SF



Dark Blue icons indicate a new "Coming Soon" to the map.