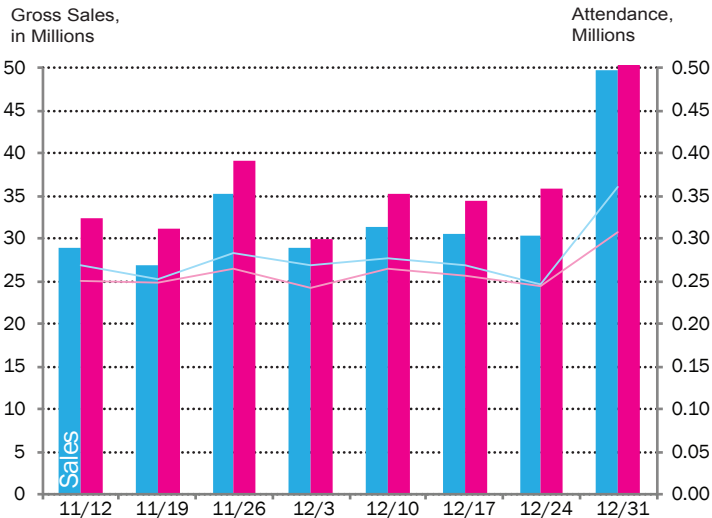


Times Square December 2017 Key Indicators

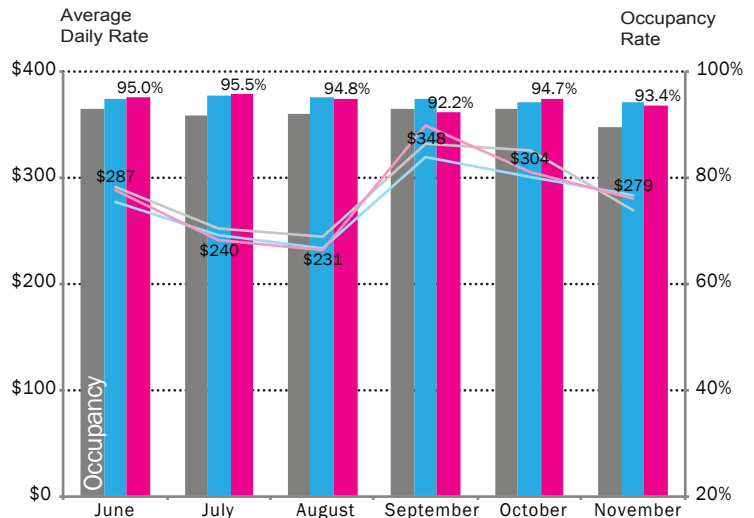
BROADWAY Last 8 Weeks



Broadway ended 2017 on a high note, grossing over \$50 million in sales during the last week of the year.

Source: The Broadway League

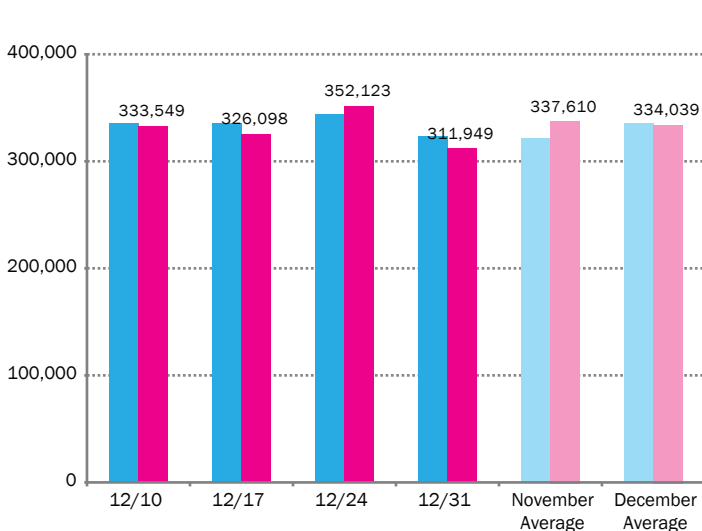
HOTELS Last 6 Months



Times Square hotels continue to maintain some of the highest occupancy rates in the city. Average daily rates have dropped slightly with seasonal trends and are on par with those of 2016.

Source: STR

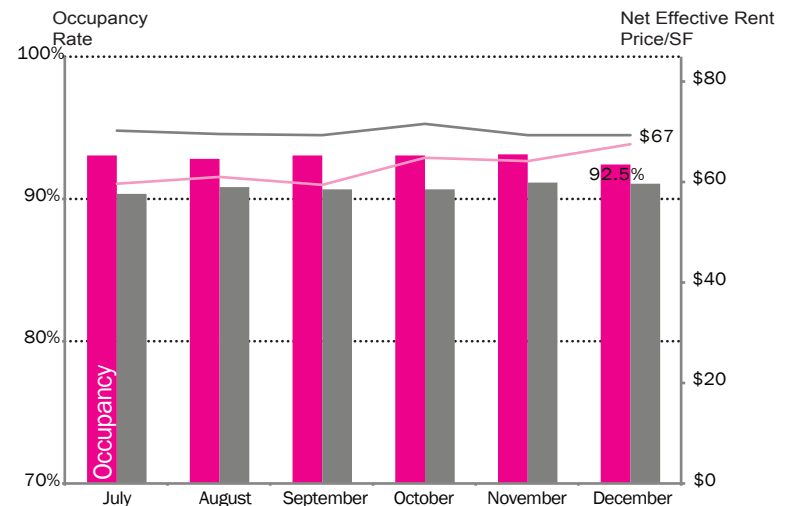
PED COUNTS Last 4 Weeks



December's average daily pedestrian count was similar to that of last year. Counts were down slightly at the end of the month due to unseasonably cold weather.

Source: Springboard

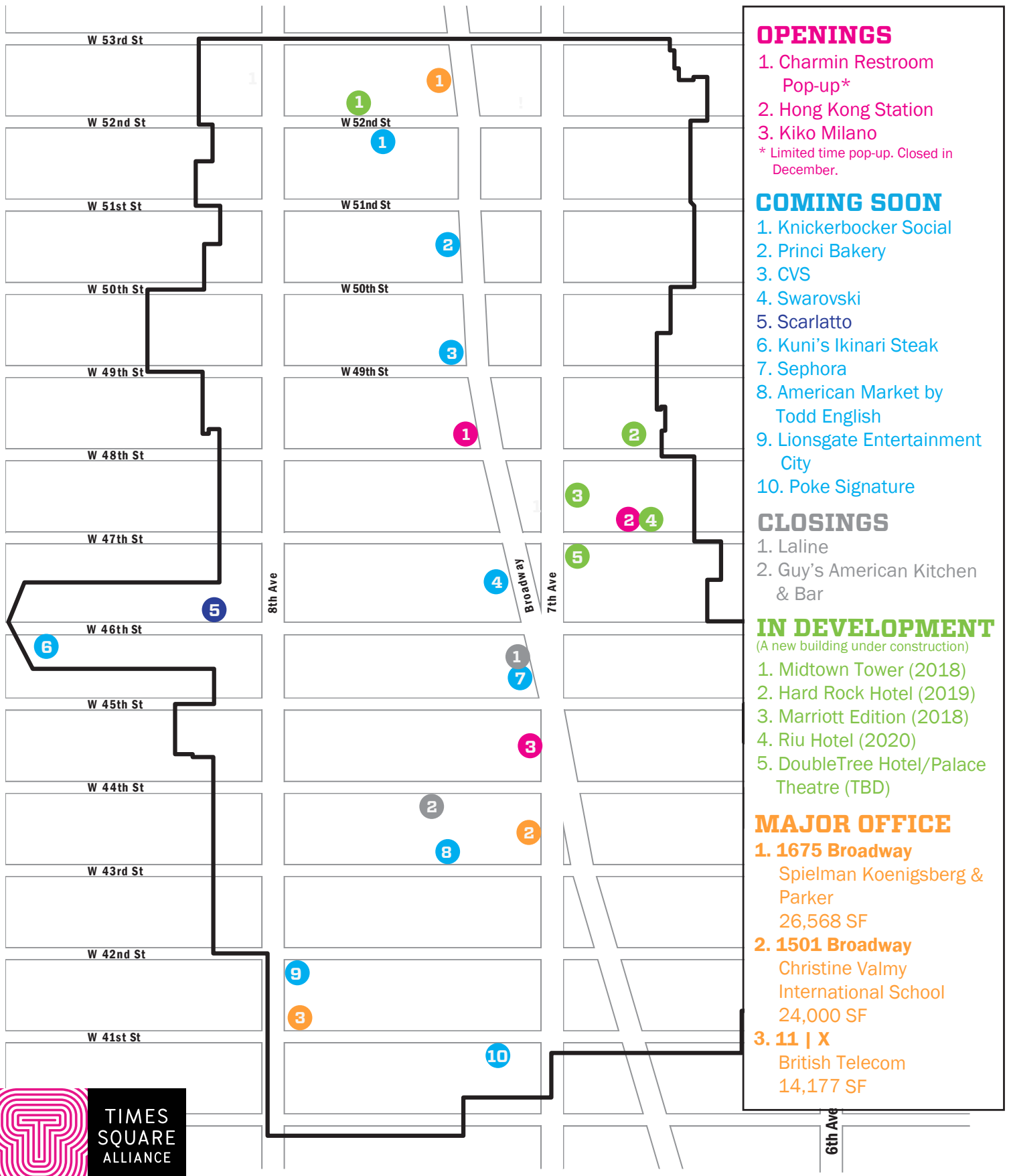
CLASS A Last 6 Months



Times Square Class A occupancy rates remained stable this month near 93%. Average price per square foot increased slightly from \$64 to \$67.

Source: CoStar, Compstak

*Beginning in December 2016, the Alliance changed their methodology calculating Class A commercial rents. The reported number is now a six-month moving average of net effective rents.



OPENINGS

- Charmin Restroom Pop-up*
- Hong Kong Station
- Kiko Milano

* Limited time pop-up. Closed in December.

COMING SOON

- Knickerbocker Social
- Princi Bakery
- CVS
- Swarovski
- Scarlatto
- Kuni's Ikinari Steak
- Sephora
- American Market by Todd English
- Lionsgate Entertainment City
- Poke Signature

CLOSINGS

- Laline
- Guy's American Kitchen & Bar

IN DEVELOPMENT
(A new building under construction)

- Midtown Tower (2018)
- Hard Rock Hotel (2019)
- Marriott Edition (2018)
- Riu Hotel (2020)
- DoubleTree Hotel/Palace Theatre (TBD)

MAJOR OFFICE

- 1675 Broadway**
Spielman Koenigsberg & Parker
26,568 SF
- 1501 Broadway**
Christine Valmy International School
24,000 SF
- 11 | X**
British Telecom
14,177 SF



Dark Blue icons indicate a new "Coming Soon" to the map.