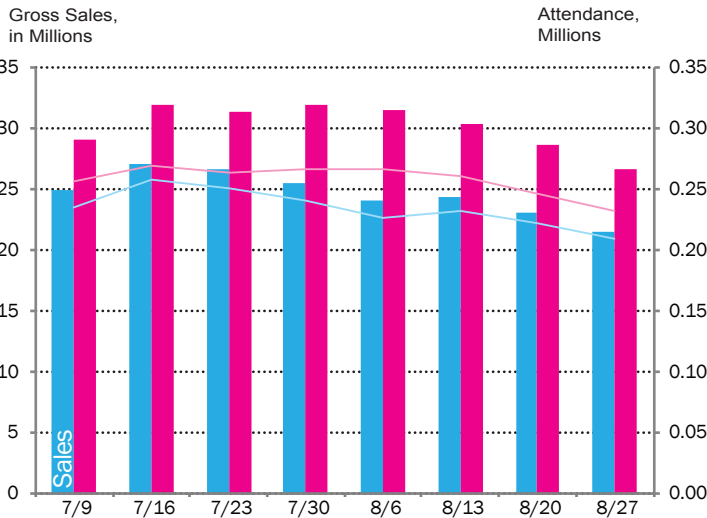


Times Square

August 2017 Key Indicators

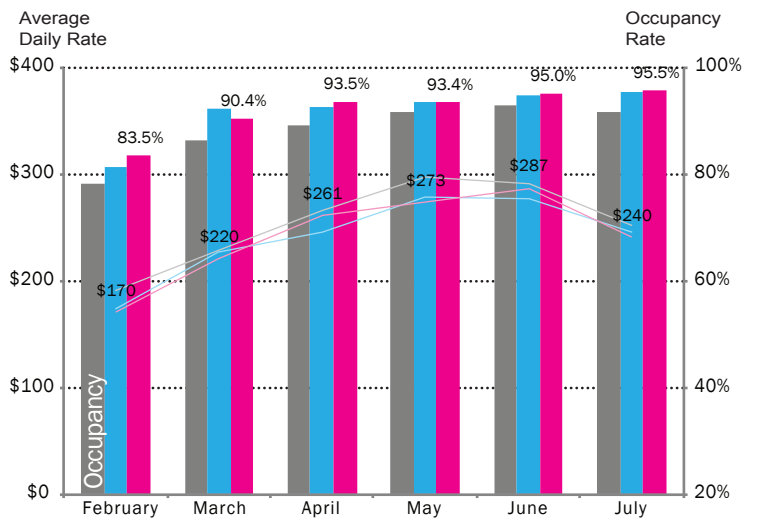
BROADWAY Last 8 Weeks



Both Broadway sales and attendance are significantly higher than the same time last year, representing a 25% increase and 13% increase respectively.

Source: The Broadway League

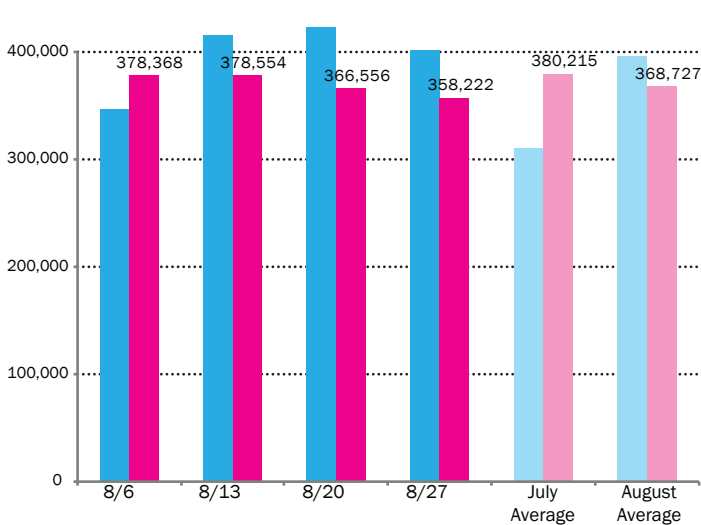
HOTELS Last 6 Months



Times Square hotels continue to maintain some of the highest occupancy rates in the city. In line with seasonal trends, average daily rates are down slightly.

Source: STR

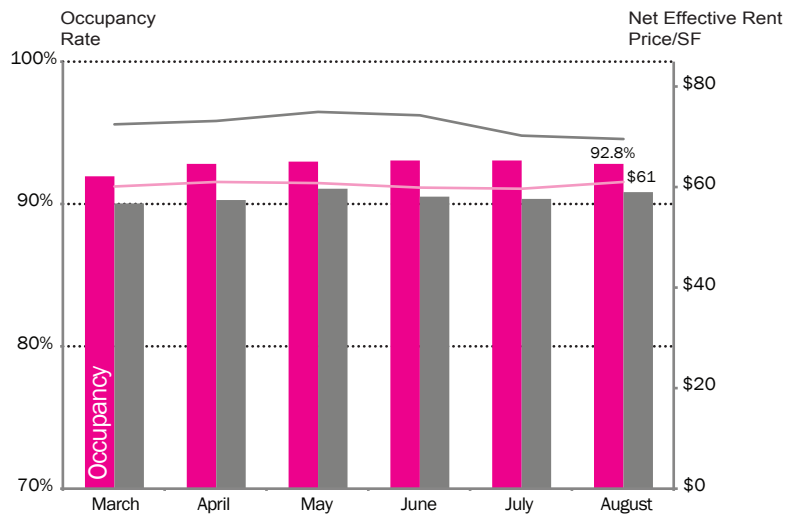
PED COUNTS Last 4 Weeks



August's average daily pedestrian count is down slightly compared to July and this time last year. On average, nearly 367,000 people visited Times Square each day of the month.

Source: Springboard

CLASS A Last 6 Months



Both Times Square Class A occupancy rates and average price per square foot remained stable this month at 93% and \$61/SF, respectively. *

Source: CoStar, Compstak

*Beginning in December 2016, the Alliance changed their methodology calculating Class A commercial rents. The reported number is now a six-month moving average of net effective rents.

MAJOR OFFICE

1. 810 Seventh Avenue
Tenor Capital Management
8,686 SF
2. 787 Seventh Avenue
GTIS Partners
28,677 SF
3. 1633 Broadway
Tzell Travel Group
105,892 SF
4. 4 Times Square
HedgeServ Corp.
53,416 SF
5. 7 Times Square
The Brattle Group
14,446 SF

OPENINGS

1. SoHo Park
2. 360 Bar & Grill
3. Toys“R”Us

COMING SOON

1. Sprint
2. Ground Central Coffee
3. Princi Bakery
4. Verizon
5. CVS
6. Grab n Go Shoppe
7. Opry City Stage
8. NFL Times Square
9. Hershey's Chocolate World
10. Friedman's Cafe
11. Swarovski
12. Bond 45
13. Kuni's Ikinari Steak
14. Hold Fast
15. Wahlburgers
16. Sephora
17. Kiko Milano
18. Old Navy
19. GAP
20. National Geographic Encounter: Ocean Odyssey
21. American Market by Todd English
22. Bluestone Lane Coffee

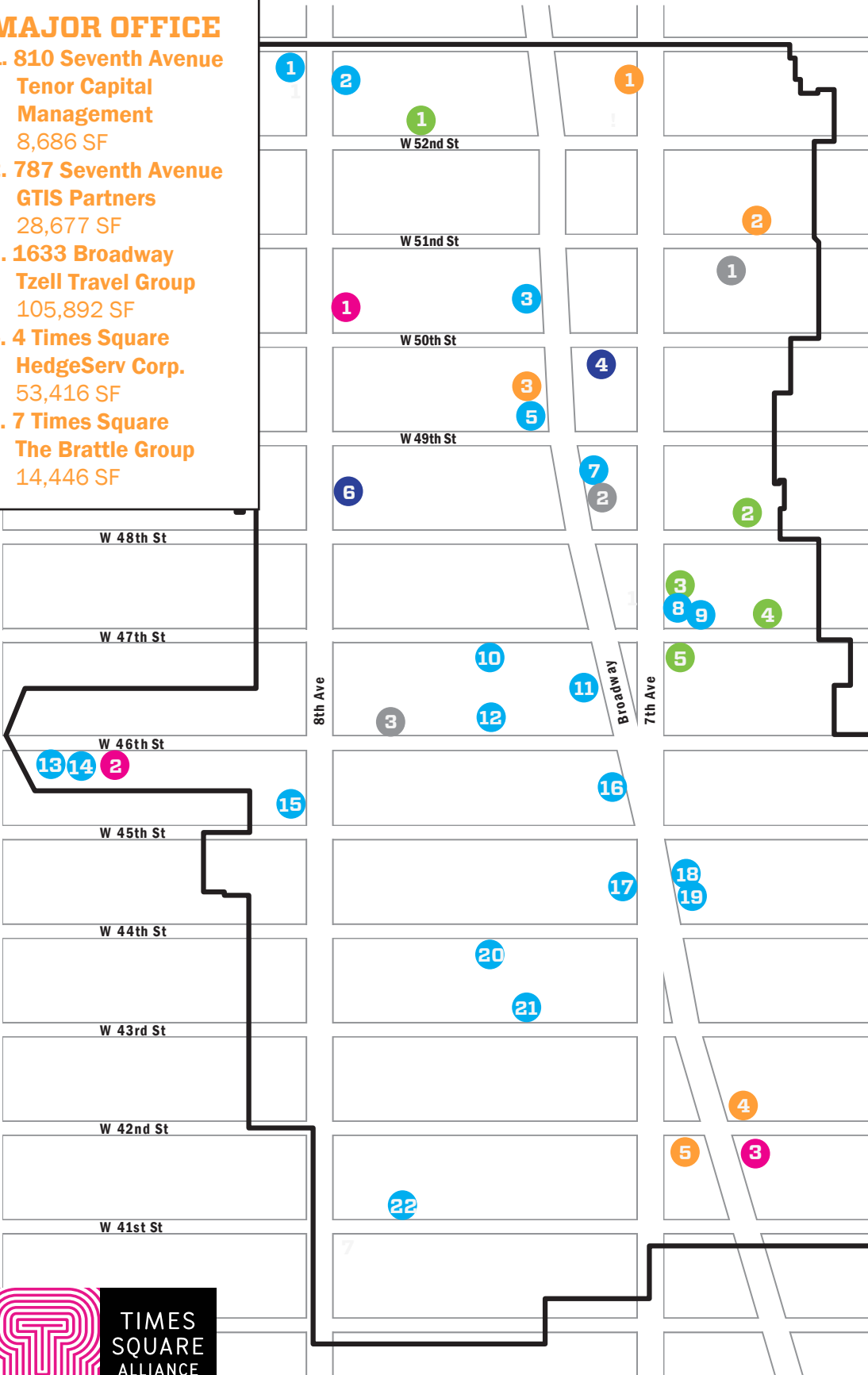
CLOSINGS

1. P.R. All Star Island
2. Diamond Horseshoe
3. Kellogg's NYC

IN DEVELOPMENT

(A new building under construction)

1. Midtown Tower (2017)
2. Hard Rock Hotel (2019)
3. Marriott Edition (2018)
4. Riu Hotel (2020)
5. DoubleTree Hotel/Palace Theatre (TBD)



Dark Blue icons indicate a new "Coming Soon" to the map.

For questions about retail or office changes in Times Square, contact Marianne Vernetson at mvernetson@TimesSquareNYC.org