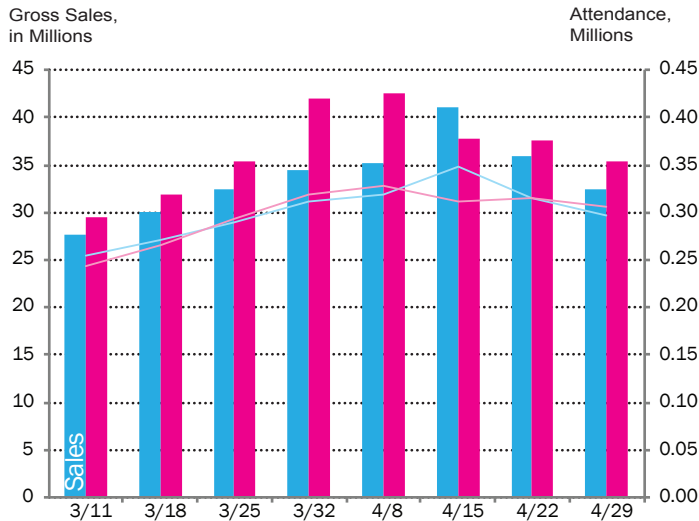


Times Square

April 2018 Key Indicators

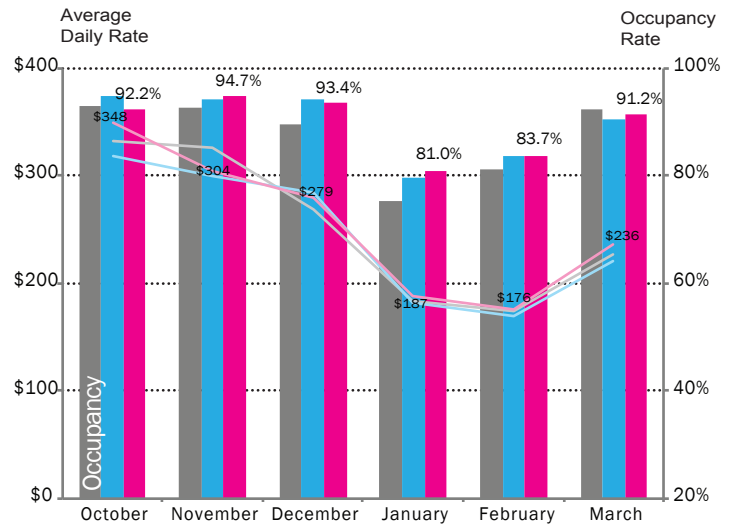
BROADWAY Last 8 Weeks



Broadway sales and attendance remained strong in April. There were an average of 36 shows playing on Broadway this month, compared to 39 shows in April 2017.

Source: The Broadway League

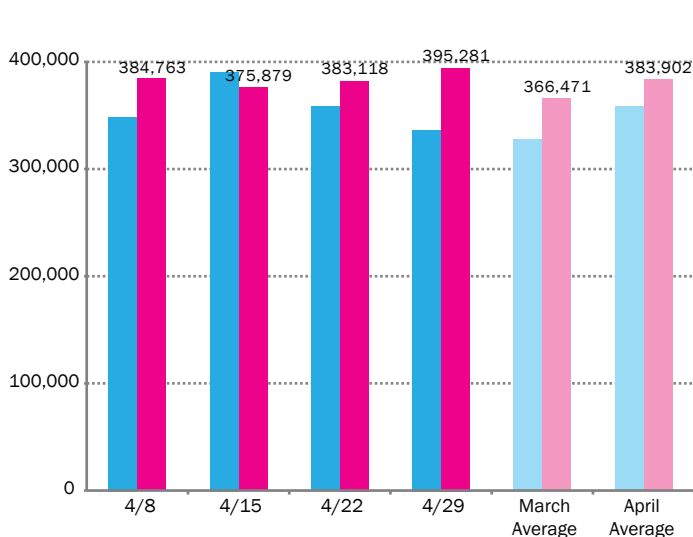
HOTELS Last 6 Months



Following seasonal trends, hotel occupancy increased and average daily room rates increased significantly in March. While room rates outpace those of the last two years, occupancy has dropped below 2016 levels for the first time this year.

Source: STR

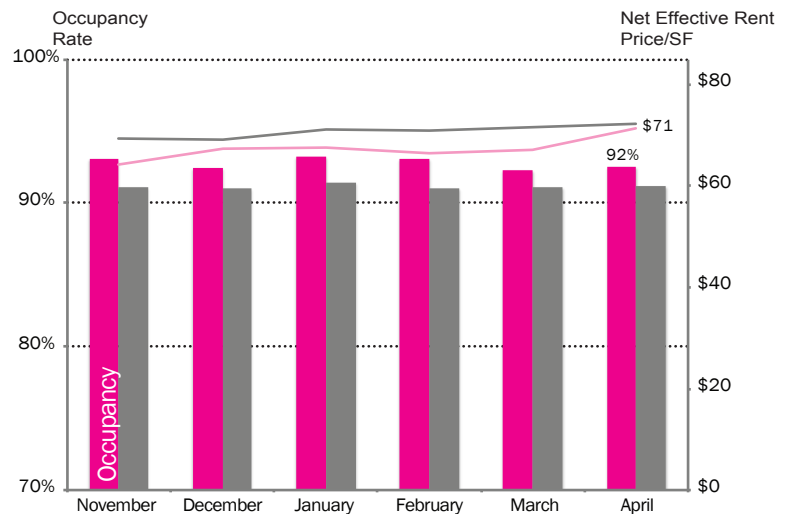
PED COUNTS Last 4 Weeks



Pedestrian counts increased slightly in April. This month's average daily count was 383,902, exceeding that of March 2018 by 5% and April 2017 by 7%. This month, Times Square reached a peak daily count of 447,888 people on Saturday, April 14.

Source: Springboard

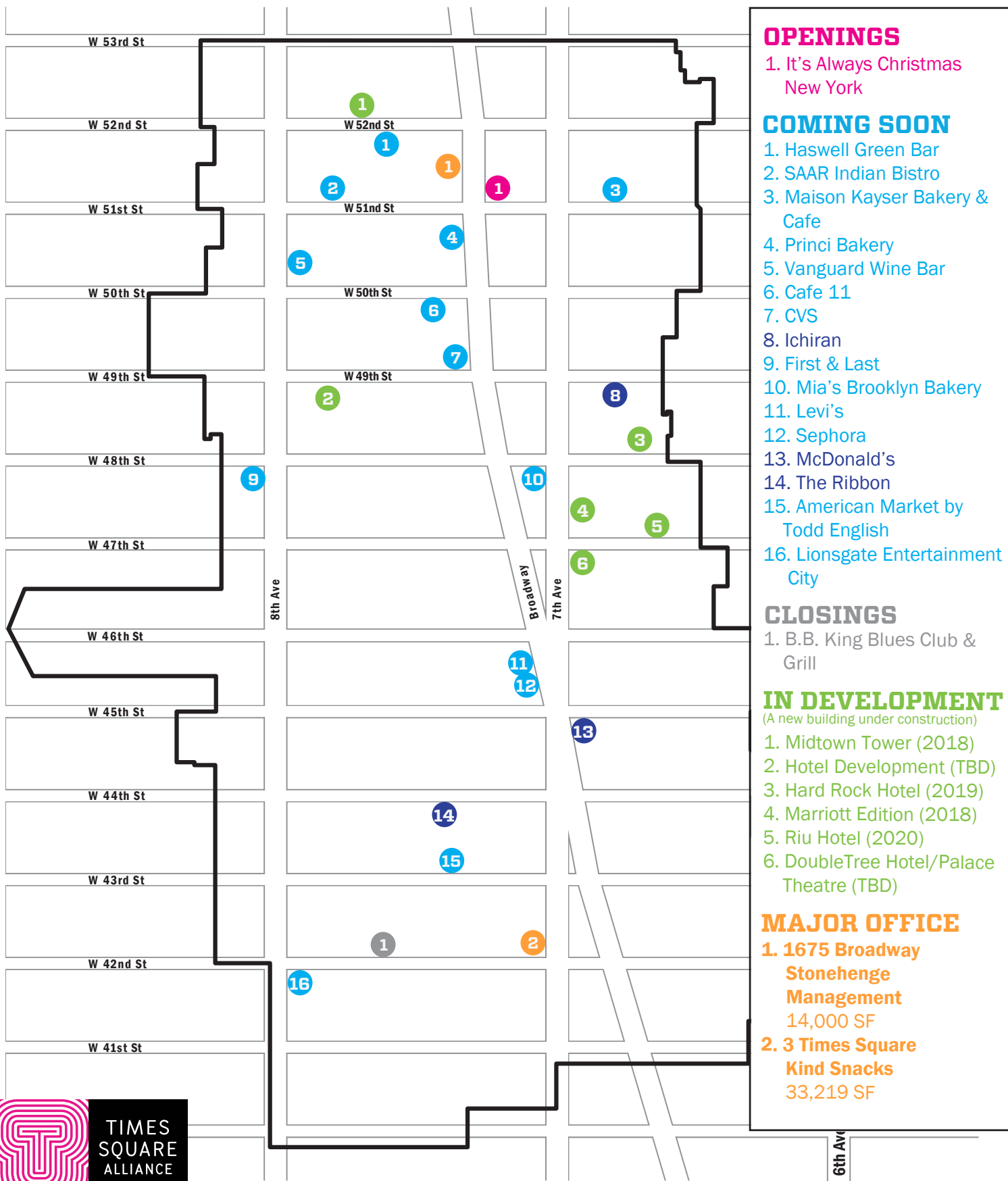
CLASS A Last 6 Months



Times Square Class A occupancy rates remained stable at 92%. Average price per square foot increased slightly from \$67 to \$71.

Source: CoStar, Compstak

*Beginning in December 2016, the Alliance changed their methodology calculating Class A commercial rents. The reported number is now a six-month moving average of net effective rents.



OPENINGS

1. It's Always Christmas New York

COMING SOON

1. Haswell Green Bar
2. SAAR Indian Bistro
3. Maison Kayser Bakery & Cafe
4. Princi Bakery
5. Vanguard Wine Bar
6. Cafe 11
7. CVS
8. Ichiran
9. First & Last
10. Mia's Brooklyn Bakery
11. Levi's
12. Sephora
13. McDonald's
14. The Ribbon
15. American Market by Todd English
16. Lionsgate Entertainment City

CLOSINGS

1. B.B. King Blues Club & Grill

IN DEVELOPMENT

(A new building under construction)

1. Midtown Tower (2018)
2. Hotel Development (TBD)
3. Hard Rock Hotel (2019)
4. Marriott Edition (2018)
5. Riu Hotel (2020)
6. DoubleTree Hotel/Palace Theatre (TBD)

MAJOR OFFICE

1. 1675 Broadway
Stonehenge Management
14,000 SF
2. 3 Times Square
Kind Snacks
33,219 SF

Dark Blue icons indicate a new "Coming Soon" to the map.